

COMPACT LOAD CELLS

PREMIUM "S" TYPE (SSC) SERIES LOAD CELLS

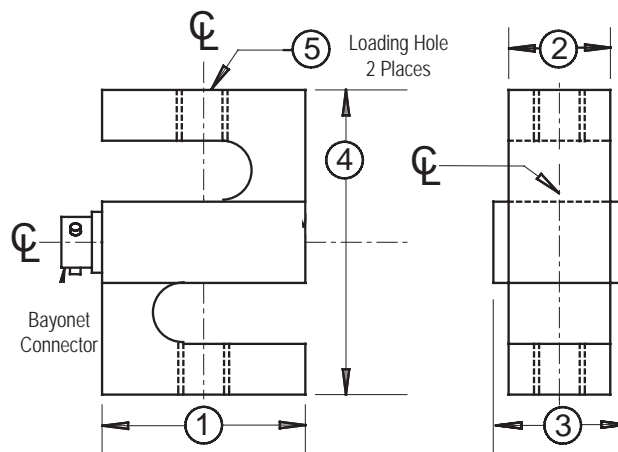
FEATURES

Premium Version of the Standard "S" Cell
 Designed for the Test Measurements Market
 In-Line Loading
 Sealed for Environmental Protection
 Integral Connector or Cable



SPECIFICATIONS

PARAMETERS	MODEL	
	CAPACITY (lbf)	
	50, 100, 250	500, 1K, 2K 3K, 5K
Accuracy		
Zero Balance, % R.O.	+/- 1.0	+/- 1.0
Non linearity, % R.O.	+/- 0.03	+/- 0.03
Hysteresis, % R.O.	+/- 0.03	+/- 0.03
Non-Repeatability, % R.O.	+/- 0.01	+/- 0.01
Static Error Band, % R.O.	+/- 0.03	+/- 0.03
Creep, % Reading in 20 Minutes	+/- 0.03	+/- 0.03
Temperature		
Range, Compensated, °F	+15 to +115	+15 to +115
Range, Operating, °F	-65 to +200	-65 to +200
Effect on Sensitivity, % Rdg/100 °F	0.08	0.08
Effect on Zero, %R.O./100 °F	0.15	0.15
Electrical		
Excitation Voltage, Recommended, Vdc	10	10
Input resistance, Ohms	350 +40/-3.5	350 +40/-3.5
Output Resistance, Ohms	350 +/- 3.5	350 +/- 3.5
Sensitivity (Rated Output), mV/V, Nominal	3	3
Insulation Resist., Bridge/Case, Meg Ohm	5000 (@ 50 VDC)	5000 (@ 50 VDC)
Mechanical		
Safe Overload Range, % R.O.	150	150
Flexure Material	Aluminum	Stainless Steel



DIMENSIONS

Capacity lbf	1	2	3	4	5
50	2.00	.48	.80	2.50	1/4 - 28 UNF-2B
100	2.00	.48	.80	2.50	1/4 - 28 UNF-2B
250	2.00	.48	.80	2.50	1/4 - 28 UNF-2B
500	2.00	.97	1.42	3.00	1/2 - 20 UNF-2B
1K	2.00	.97	1.42	3.00	1/2 - 20 UNF-2B
2K	2.00	.97	1.42	2.97	1/2 - 20 UNF-2B
3K	2.00	.97	1.42	2.97	1/2 - 20 UNF-2B
5K	2.50	1.47	1.92	3.47	5/8 - 18 UNF-2B

OPTIONS

Dual bridge
 Output adjustment to standard
 Special connector
 Integral cable

ACCESSORIES

Mating connector
 Loading fixtures
 Interconnect cable
 Shunt calibration resistor
 Instrumentation