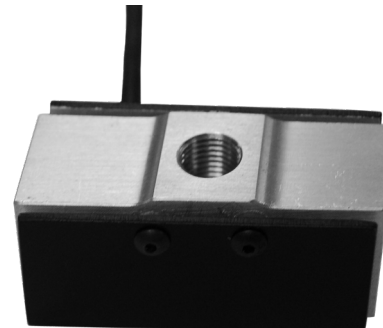


# SLH SERIES LOW HEIGHT S-TYPE LOAD CELLS

## FEATURES

- Compact Size
- Tension and Compression
- Accuracy-.05%-.10% of R.O.
- Integral Cable
- 3pt Tension Calibration
- Proprietary Modulus Compensated Strain Gages



## SPECIFICATIONS

Model Capacity	U.S. lbf. Metric	SLH	
		10-300 50N-1.35kN	500, 1K 2.25kN, 4.5kN
<b>PARAMETERS</b>			
<b>ACCURACY</b>			
Static Error Band, % Rated Output		+/-0.050	+/-0.100
Nonlinearity, % Rated Output		+/-0.050	+/-0.100
Hysteresis, % Rated Output		+/-0.050	+/-0.100
Nonrepeatability, % Rated Output		+/-0.030	+/-0.030
Creep, % in 20 minutes		+/-0.050	+/-0.050
Zero Balance, % Rated Output		+/-1.0	+/-1.0
<b>TEMPERATURE</b>			
Range, Compensated, °F		0 to +150	0 to +150
Range, Compensated, °C		-15 to +65	-15 to +65
Range, Operating, °F		-65 to +200	-65 to +200
Range, Operating, °C		-55 to +90	-55 to +90
Effect on Sensitivity, % Rdg/ °F		+/-0.0008	+/-0.0008
Effect on Sensitivity, % Rdg/ °C		+/-0.0015	+/-0.0015
Effect on Zero, % Rated Output/ °F		+/-0.005	+/-0.005
Effect on Zero, % Rated Output/ °C		+/-0.010	+/-0.010
<b>ELECTRICAL</b>			
Rated Output, mV/V, Nominal		2	2
Excitation Voltage, VDC Maximum		15	15
Input Resistance, Ohms		350	350
Output Resistance, Ohms		350	350
Insulation Resistance, Megohm		5000	5000
<b>MECHANICAL</b>			
Safe Overload Range, % Rated Capacity		+/-150	+/-150
Weight lb		0.15	0.15
Flexure Material		Aluminum	

## DIMENSIONS

Model Capacity	SLH					
	10 lbf	50 N	25, 50, 100 lbf	115, 225, 450 N	200,300, 500,1K lbf	900N,1.35kN, 2.25kN,4.5kN
<b>Dimensions</b>	inch	mm	inch	mm	inch	mm
1.	.73	18.6	.73	18.6	.98	24.9
2.	1.80	45.7	2.00	50.8	2.12	53.8
3.	.52	13.2	.64	16.3	.90	22.9
4.	.34	8.6	.46	11.7	.72	18.3
5.	.90	22.9	1.00	25.4	1.06	26.9
6.	.50	12.7	.50	12.7	.57	14.5
7.	10 - 32 .20 Deep		1/4 - 28 .25 Deep		3/8 - 24 .38 Deep	

