

5200 SERIES UNIVERSAL HIGH CAPACITY LOAD CELLS

FEATURES

- Universal Tension and Compression
- 4 Column Cell
- .1% Accuracy
- Accomodates High Side and Off-Center Loads
- 5pt Tension & Compression Calibration
- Proprietary Modulus Compensated Strain Gages
- Metric Capacities Available - Consult Factory



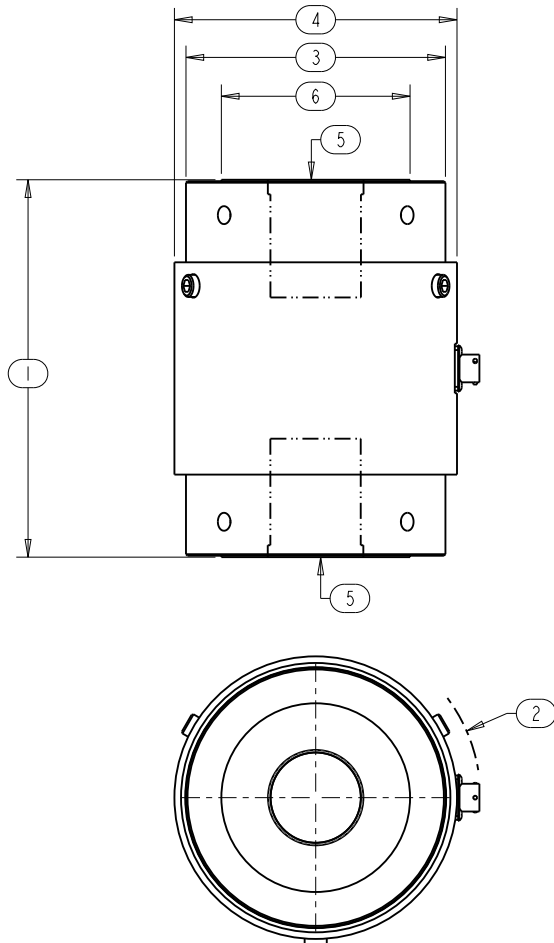
SPECIFICATIONS

| Model | 5230 | 5240 | 5260 | 5280 |
|---------------------------------------|-----------------------------|-------------|-------------|-------------|
| Capacity U.S. lbf. | 100K, 135K | 250K | 500K | 1000K |
| PARAMETERS | | | | |
| ACCURACY | | | | |
| Static Error Band, % Rated Output | +/- .100 | +/- .100 | +/- .100 | +/- .150 |
| Nonlinearity, % Rated Output | +/- .100 | +/- .100 | +/- .100 | +/- .150 |
| Hysteresis, % Rated Output | +/- .100 | +/- .100 | +/- .100 | +/- .150 |
| Nonrepeatability, % Rated Output | +/- .010 | +/- .010 | +/- .010 | +/- .010 |
| Creep, % in 20 minutes | +/- .025 | +/- .025 | +/- .025 | +/- .025 |
| Zero Balance, % Rated Output | +/- 1.0 | +/- 1.0 | +/- 1.0 | +/- 1.0 |
| TEMPERATURE | | | | |
| Range, Compensated, °F | +15 to +115 | +15 to +115 | +15 to +115 | +15 to +115 |
| Range, Compensated, °C | -10 to +45 | -10 to +45 | -10 to +45 | -10 to +45 |
| Range, Operating, °F | -30 to +200 | -30 to +200 | -30 to +200 | -30 to +200 |
| Range, Operating, °C | -34 to +90 | -34 to +90 | -34 to +90 | -34 to +90 |
| Effect on Sensitivity, % Rdg/ °F | +/- 0.0008 | +/- 0.0008 | +/- 0.0008 | +/- 0.0008 |
| Effect on Sensitivity, % Rdg/ °C | +/- 0.0015 | +/- 0.0015 | +/- 0.0015 | +/- 0.0015 |
| Effect on Zero, % Rated Output/ ° F | +/- 0.0015 | +/- 0.0015 | +/- 0.0015 | +/- 0.0015 |
| Effect on Zero, % Rated Output/ ° C | +/- 0.0027 | +/- 0.0027 | +/- 0.0027 | +/- 0.0027 |
| ELECTRICAL | | | | |
| Rated Output, mV/V, Nominal | 2 | 2 | 2 | 2 |
| Excitation Voltage, VDC Maximum | 15 | 15 | 15 | 15 |
| Input Resistance, Ohms | 700 | 700 | 700 | 700 |
| Output Resistance, Ohms | 700 | 700 | 700 | 700 |
| Insulation Resistance, Megohm | 5000 | 5000 | 5000 | 5000 |
| Bayonet Connector | PT02E-10-6P (MS3112E-10-6P) | | | |
| MECHANICAL | | | | |
| Safe Overload Range, % Rated Capacity | +/- 150 | +/- 150 | +/- 150 | +/- 150 |
| Weight lb | 34 | 42 | 129 | 331 |
| Flexure Material | Steel | | | |

5200 SERIES UNIVERSAL HIGH CAPACITY LOAD CELLS

DIMENSIONS

| Model | 5230 | 5240 | 5260 | 5280 |
|------------|------------------|-------------------|-----------------|-----------------|
| Capacity | 100K, 135K lbf | 250K lbf | 500K lbf | 1000K |
| Dimensions | inch | inch | inch | Consult Factory |
| 1. | 8.00 | 8.00 | 12.00 | |
| 2. | R 3.23 | R 3.48 | R 4.96 | |
| 3. | 5.00 | 5.50 | 8.40 | |
| 4. | 5.49 | 5.99 | 8.90 | |
| 5. | 2-12 2.4 Deep | 2-12 2.75 Deep | 4-8 4.0 Deep | |
| 6. | 3.30 | 4.00 | 6.00 | |



OPTIONS

- Additional bridges
- Output adjustment to standard
- Compression overload protection
- Integral cable
- Custom connectors
- Connector Protectors

ACCESSORIES

- Mating connector
- Loading fixtures
- Interconnect cable
- Shunt calibration resistor
- Instrumentation