

5100 SERIES HIGH CAPACITY COMPRESSION COLUMN FORCE TRANSDUCERS

FEATURES

- Compact Design
- .15% Accuracy
- Special Capacities to 2 Million lbf.
- 5pt Compression Calibration
- Proprietary Modulus Compensated Strain Gages
- Metric Capacities Available - Consult Factory

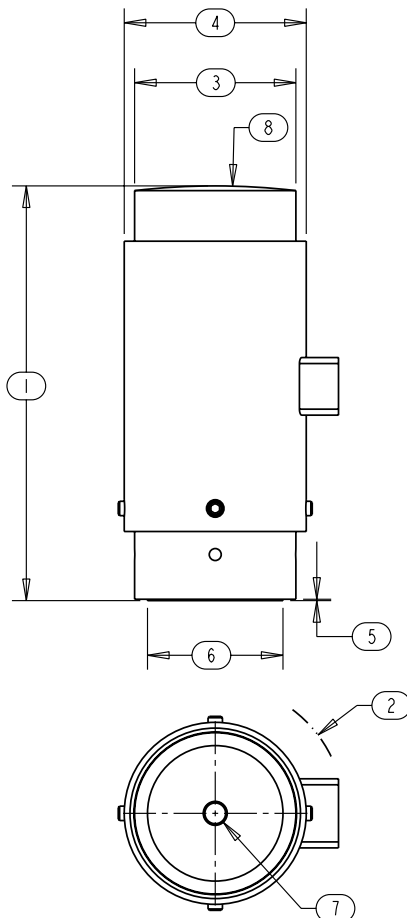


SPECIFICATIONS

| Model | 5130 | 5135 | 5140 | 5160 | 5180 |
|---------------------------------------|-----------------------------|-------------|-------------|-------------|-------------|
| Capacity U.S. lbf. | 100K | 200K | 300, 400K | 500K, 600K | 750K, 1000K |
| PARAMETERS | | | | | |
| ACCURACY | | | | | |
| Static Error Band, % Rated Output | +/-0.150 | +/-0.150 | +/-0.150 | +/-0.150 | +/-0.150 |
| Nonlinearity, % Rated Output | +/-0.150 | +/-0.150 | +/-0.150 | +/-0.150 | +/-0.150 |
| Hysteresis, % Rated Output | +/-0.150 | +/-0.150 | +/-0.150 | +/-0.150 | +/-0.150 |
| Nonrepeatability, % Rated Output | +/-0.010 | +/-0.010 | +/-0.010 | +/-0.010 | +/-0.010 |
| Creep, % in 20 minutes | +/-0.025 | +/-0.025 | +/-0.025 | +/-0.025 | +/-0.025 |
| Zero Balance, % Rated Output | +/-1.0 | +/-1.0 | +/-1.0 | +/-1.0 | +/-1.0 |
| TEMPERATURE | | | | | |
| Range, Compensated, °F | +15 to +115 | +15 to +115 | +15 to +115 | +15 to +115 | +15 to +115 |
| Range, Compensated, °C | -10 to +45 | -10 to +45 | -10 to +45 | -10 to +45 | -10 to +45 |
| Range, Operating, °F | -30 to +200 | -30 to +200 | -30 to +200 | -30 to +200 | -30 to +200 |
| Range, Operating, °C | -34 to +90 | -34 to +90 | -34 to +90 | -34 to +90 | -34 to +90 |
| Effect on Sensitivity, % Rdg/ °F | +/-0.003 | +/-0.003 | +/-0.003 | +/-0.003 | +/-0.003 |
| Effect on Sensitivity, % Rdg/ °C | +/-0.006 | +/-0.006 | +/-0.006 | +/-0.006 | +/-0.006 |
| Effect on Zero, % Rated Output/ ° F | +/-0.003 | +/-0.003 | +/-0.003 | +/-0.003 | +/-0.003 |
| Effect on Zero, % Rated Output/ ° C | +/-0.006 | +/-0.006 | +/-0.006 | +/-0.006 | +/-0.006 |
| ELECTRICAL | | | | | |
| Rated Output, mV/V, Nominal | 2 | 2 | 2 | 2 | 2 |
| Excitation Voltage, VDC Maximum | 15 | 15 | 15 | 15 | 15 |
| Input Resistance, Ohms | 350 | 350 | 350 | 350 | 350 |
| Output Resistance, Ohms | 350 | 350 | 350 | 350 | 350 |
| Insulation Resistance, Megohm | 5000 | 5000 | 5000 | 5000 | 5000 |
| Bayonet Connector | PT02E-10-6P (MS3112E-10-6P) | | | | |
| MECHANICAL | | | | | |
| Safe Overload Range, % Rated Capacity | 150 | 150 | 150 | 150 | 150 |
| Weight lb | 5 | 13 | 25 | 45, 46 | 96 |
| Flexure Material | Steel | Steel | Steel | Steel | Steel |

5100 SERIES HIGH CAPACITY COMPRESSION COLUMN FORCE TRANSDUCERS

| DIMENSIONS | | | | | |
|------------|---------------------|----------------------|------------------------------|--------------------|---------------------|
| Model | 5130 | 5135 | 5140 | 5160 | 5180 |
| Capacity | 100K lbf | 200K lbf | 300K, 400K lbf | 500K, 600K lbf | 750K, 1000K lbf |
| Dimensions | inch | inch | inch | inch | inch |
| 1. | 5.00 | 7.00 | 9.00 | 10.00 | 12.00 |
| 2. | R 1.99, 2.26 | R 2.33 | R 2.78- 300K R 3.00- 400K | R 3.29 | R 4.02 |
| 3. | 2.00 | 3.00 | 3.50-300K 3.70-400K | 4.50 | 6.00 |
| 4. | 2.38 | 3.25 | 3.95 | 5.00 | 6.50 |
| 5. | .03 | .03 | .03 | .03 | .03 |
| 6. | 1.68 | 2.37 | 2.94-300K 3.50-400K | 3.89 | 5.02 |
| 7. | 3/8 -24 .50 Deep | 1/2 - 20 .50 Deep | 1/2 - 20 .75 Deep. | 1 - 14 .75 Deep | 1 - 14 1.00 Deep |
| 8. | R 12 | R 12 | R 15-300K R 16-400K | R 20 | R 20 |



OPTIONS

- Additional bridges
- Output adjustment to standard
- Compression overload protection
- Integral cable
- Custom connectors
- Connector Protectors

ACCESSORIES

- Mating connector
- Loading fixtures
- Interconnect cable
- Shunt calibration resistor
- Instrumentation