

COLUMN LOAD CELLS

HEAVY DUTY (XHD) SERIES FATIGUE RATED UNIVERSAL LOAD CELLS

FEATURES

- High Capacity Measurement in a Compact Size
- Fatigue Rated--Guaranteed for 100 Million Fully Reversed Load Cycles
- High Accuracy to .05%.
- Stainless Steel



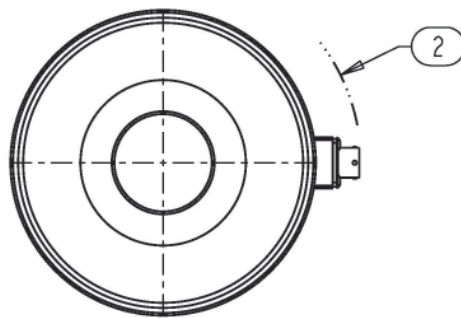
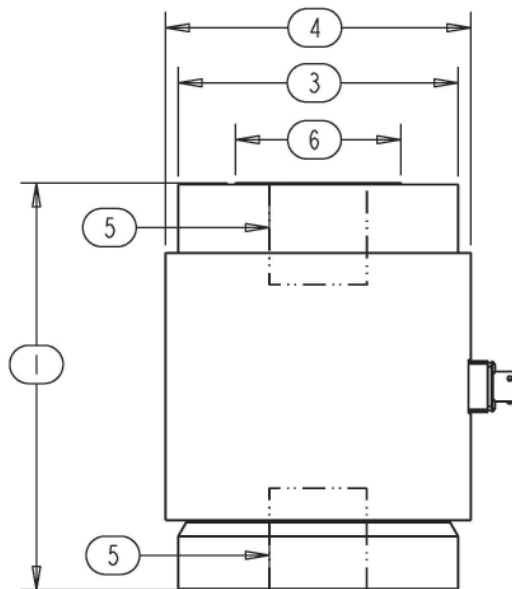
SPECIFICATIONS

PARAMETERS	MODEL			
	XHD20	XHD30	XHD40	XHD60
	CAPACITY (lbf)			
	55K	110K	220K	550K
Accuracy				
Static Error Band, % R.O.	+/- .05	+/- .05	+/- .08	+/- .08
Hysteresis, % R.O.	+/- .05	+/- .05	+/- .08	+/- .08
Nonlinearity, % R.O.	+/- .05	+/- .05	+/- .08	+/- .08
Nonrepeatability, % R.O.	+/- .01	+/- .01	+/- .01	+/- .01
Creep, % in 20 minutes	+/- .025	+/- .025	+/- .025	+/- .025
Zero Balance, % R.O.	+/- 1.0	+/- 1.0	+/- 1.0	+/- 1.0
Temperature				
Range, Compensated, °F	+15 to +115	+15 to +115	+15 to +115	+15 to +115
Range, Operating, °F	-30 to +200	-30 to +200	-30 to +200	-30 to +200
Effect on Sensitivity, % Rdg/100°F	+/- .08	+/- .08	+/- .08	+/- .08
Effect on Zero, % R.O./100°F	+/- .15	+/- .15	+/- .15	+/- .15
Electrical				
Rated Output, mV/V, Nominal	2.0	2.0	2.0	2.0
Excitation Voltage, VDC	10	10	10	10
Input Resistance, Ohms	350	350	350	350
Output Resistance, Ohms	350	350	350	350
Insulation Resistance, Megohm	5000	5000	5000	5000
Mechanical				
Safe Overload Range, % R.O.	+/- 200	+/- 200	+/- 200	+/- 200
Weight (lbs.)	26	47	---	---
Flexure Material	Stainless Steel	Stainless Steel	Stainless Steel	Stainless Steel

COLUMN LOAD CELLS

DIMENSIONS

Review Drawing (in inches)	MODEL		
	XHD20	XHD30	XHD40 & 60
	CAPACITY (lbf)		
	55K	110K	220K, 550K
1. Height Total	8.00	8.00	Consult Factory
2. Max. Clearance Radius	3.10	3.86	
3. End Diameter	4.00	5.50	
4. Total Diameter	4.50	6.00	
5. End Thread	1 1/2 - 12, 2 Dp.	2 - 12, 2 Dp.	
6. Hub Diameter	2.38	3.25	



OPTIONS

- Dual bridge configuration
- Output adjustment to standard
- Integral cable
- Custom connectors
- Reduced temperature errors

ACCESSORIES

- Loading fixtures
- Interconnect cable
- Shunt calibration resistor
- Instrumentation