

STAINLESS STEEL LOAD CELLS

STAINLESS STEEL (SWS SERIES) FORCE TRANSDUCERS

FEATURES

- Stainless Steel Construction
- Welded Diaphragm
- Optional Hermetically Sealed Connector
- Guaranteed Maximum Off-Center Load and Moment Error
- Low Creep
- Low Susceptibility to Magnetic Fields
- Temp. and Barometric Pressure Compensation



Note: Shown with Optional Integral Cable.

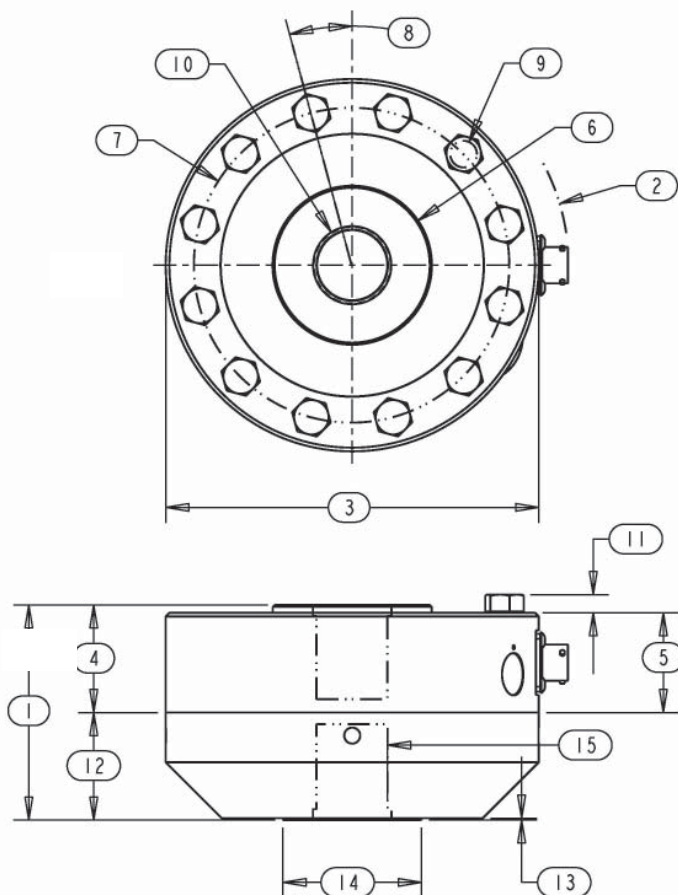
SPECIFICATIONS

PARAMETERS	MODEL		
	SWS10	SWS20	SWS30
	CAPACITY (lbf)		
	5K, 10K	25K,50K	100K
Accuracy			
Static Error Band, % R.O.	+/- .05	+/- .05	+/- .06
Nonlinearity, % R.O.	+/- .05	+/- .05	+/- .05
Hysteresis, % R.O.	+/- .06	+/- .06	+/- .06
Nonrepeatability, % R.O.	+/- .01	+/- .01	+/- .01
Creep, % in 20 minutes	+/- .025	+/- .025	+/- .025
Off-Center Load Sensitivity, % /inch	+/- .25	+/- .25	+/- .25
Side Load Sensitivity, % /inch	+/- .25	+/- .25	+/- .25
Zero Balance, % R.O.	+/- 1.0	+/- 1.0	+/- 1.0
Temperature			
Range, Compensated, °F	+15 to +115	+15 to +115	+15 to +115
Range, Operating, °F	-65 to +200	-65 to +200	-65 to +200
Effect on Sensitivity, % Rdg/100 °F	+/- .08	+/- .08	+/- .08
Effect on Zero, % R.O./100 °F	+/- .15	+/- .15	+/- .15
Electrical			
Rated Output, mV/V, Nominal	4.0	4.0	4.0
Excitation Voltage, VDC	10	10	10
Input Resistance, Ohms	350 +40/-3.5	350 +40/-3.5	350 +40/-3.5
Output Resistance, Ohms	350 +/-3.5	350 +/-3.5	350 +/-3.5
Insulation Resistance, Megohm	5000 @ 50 VDC	5000 @ 50 VDC	5000 @ 50VDC
Mechanical			
Safe Overload Range, % R.O.	+/-150	+/-150	+/-150
Flexure Material	Stainless Steel	Stainless Steel	Stainless Steel

STAINLESS STEEL LOAD CELLS

DIMENSIONS

Review Drawing (in inches)	MODEL		
	SWS10	SWS20	SWS30
	CAPACITY (lbf)		
	5K, 10K	25K, 50K	100K
1. Height Total	2.56	3.67	4.65
2. Max. Clearance Radius	2.53	3.50	4.50
3. Cell and Base Diameter	4.12	6.06	8.00
4. Cell Height to Hub	1.38	1.75	2.50
5. Cell Body Height	1.25	1.63	2.25
6. Hub Diameter	1.29	2.34 25K/2.58 50K	3.76
7. Mounting B.C. Diameter	3.50	5.13	6.50
8. Symmetric B.C. Offset	22.5 Degrees	15 Degrees	11.25 Degrees
9. Mounting Hole Diameter	.28	.41	.53
10. Hub Thread	5/8 - 18, 1.12 Dp.	1 1/4 - 12, 1.50 Dp.	1 3/4 - 12, 2.20 Dp.
11. Bolt Head Protrusion	.18	.29	.40
12. Base Thickness	1.13	1.75	2.00
13. Base Step Height	.03	.03	.03
14. Base Step Diameter	1.25	2.25	3.00
15. Base Thread	5/8 - 18, .88 Dp.	1 1/4 - 12, 1.50 Dp.	1 3/4 - 12, 1.75 Dp.



OPTIONS

- Additional bridges
- Output adjustment to standard
- Compression overload protection
- Hermetically sealed connector
- Connector protection
- Integral cable

ACCESSORIES

- Mating connector
- Loading fixtures
- Interconnect cable
- Shunt calibration resistor
- Instrumentation

THE TECHNICAL LEADER IN LOAD CELLS AND FORCE MEASUREMENT