

COMPACT LOAD CELLS

FATIGUE RATED "S" TYPE (RSC SERIES) LOAD CELLS

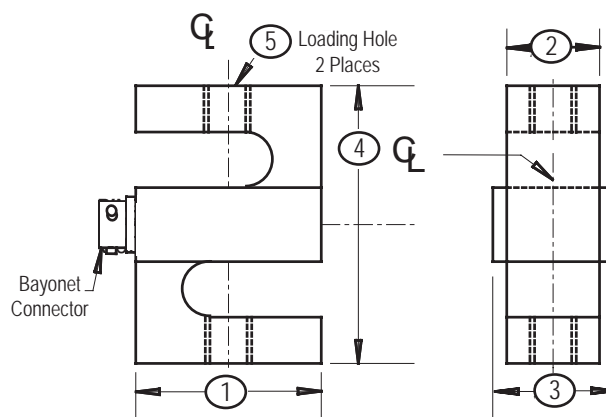
FEATURES

Designed for the Test Measurements Market
 Rugged Design "S" Cell
 Fatigue Rated
 High Resistance to Misaligned Loads
 Sealed for Environmental Protection
 Integral Connector or Cable



SPECIFICATIONS

PARAMETERS	MODEL	
	RSC	RSC
	CAPACITY (lbf)	
	50, 100, 250	500, 1K, 2K 3K, 5K
Accuracy		
Zero Balance, % R.O.	+/- 1.0	+/- 1.0
Non linearity, % R.O.	+/- 0.03	+/- 0.03
Hysteresis, % R.O.	+/- 0.03	+/- 0.03
Non-Repeatability, % R.O.	+/- 0.01	+/- 0.01
Static Error Band, % R.O.	+/- 0.03	+/- 0.03
Creep, % Reading in 20 Minutes	+/- 0.03	+/- 0.03
Temperature		
Range, Compensated, °F	+15 to +115	+15 to +115
Range, Operating, °F	-65 to +200	-65 to +200
Effect on Sensitivity, % Rdg/100 °F	0.08	0.08
Effect on Zero, %R.O./100 °F	0.15	0.15
Electrical		
Excitation Voltage, Recommended, Vdc	10	10
Input resistance, Ohms	350 +40/-3.5	350 +40/-3.5
Output Resistance, Ohms	350 +/- 3.5	350 +/- 3.5
Sensitivity (Rated Output), mV/V, Nominal	2	2
Insulation Resist., Bridge/Case, Meg Ohm	5000 (@ 50 VDC)	5000 (@ 50 VDC)
Mechanical		
Safe Overload Range, % R.O.	300	300
Flexure Material	Aluminum	Stainless Steel
Fatigue Rated	Yes	Yes



DIMENSIONS

Capacity lbf	1	2	3	4	5
100	2.00	.97	.97	2.50	3/8 - 24 UNF-2B
250	2.00	.97	.97	2.50	3/8 - 24 UNF-2B
500	2.25	1.25	1.58	2.50	1/2 - 20 UNF-2B
1K	2.25	1.25	1.58	2.50	1/2 - 20 UNF-2B

ACCESSORIES

Mating connector
 Loading fixtures
 Interconnect cable
 Shunt calibration resistor
 Instrumentation

OPTIONS

Dual bridge
 Output adjustment to standard
 Special connector
 Integral cable