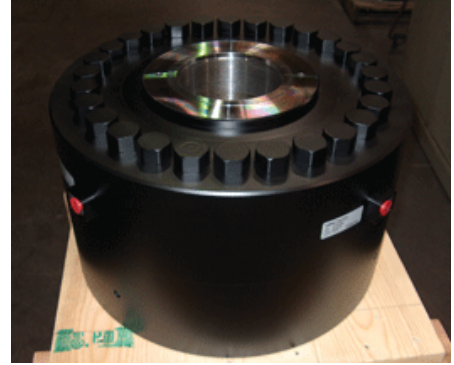


SHEAR WEB LOAD CELLS

HIGH CAPACITY FATIGUE RATED METRIC (FR - M) SERIES FORCE TRANSDUCERS

FEATURES

- First Choice for Fatigue Testing Applications
- Guaranteed for 100 Million Fully Reversed Cycles
- Low Height
- Guaranteed Maximum Off-Center Load and Moment Error
- Low Creep
- Low Susceptibility to Magnetic Fields
- Barometric Pressure Compensation



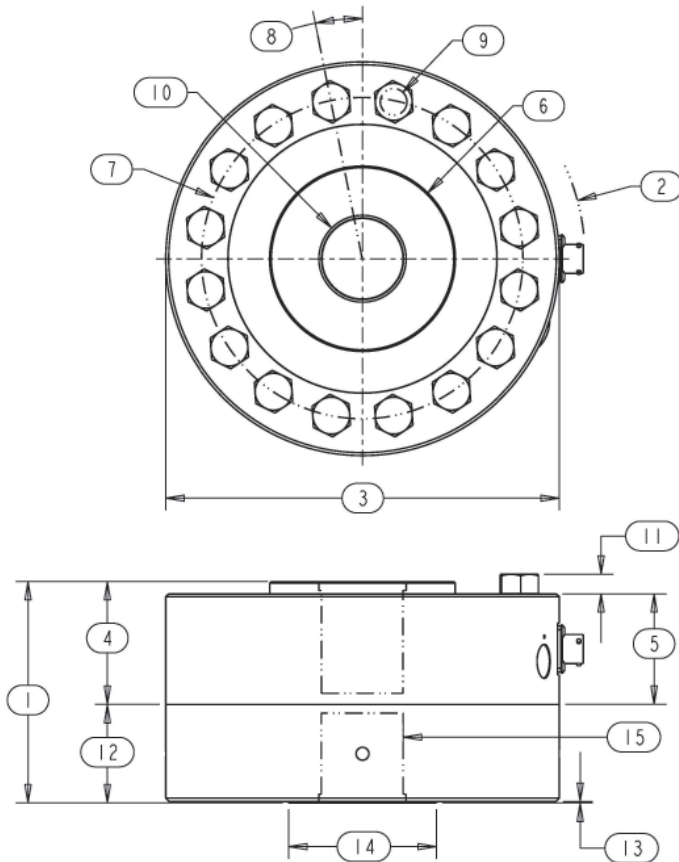
SPECIFICATIONS

PARAMETERS	MODEL			
	FR40M	FR42M	FR60M	FR60M
	CAPACITY (kN)			
	500	600	1100	1350
Accuracy				
Static Error Band, % R.O.	+/- .06	+/- .07	+/- .10	+/- .10
Hysteresis, % R.O.	+/- .06	+/- .08	+/- .10	+/- .10
Nonlinearity, % R.O.	+/- .06	+/- .08	+/- .10	+/- .10
Nonrepeatability, % R.O.	+/- .01	+/- .02	+/- .02	+/- .02
Creep, % in 20 minutes	+/- .025	+/- .025	+/- .025	+/- .025
Off-Center Load Sensitivity, %/inch	+/- .25	+/- .25	+/- .25	+/- .25
Side Load Sensitivity, %	+/- .25	+/- .25	+/- .25	+/- .25
Zero Balance, % R.O.	+/- 1.0	+/- 1.0	+/- 1.0	+/- 1.0
Temperature				
Range, Compensated, °C	-10 to +45	-10 to +45	-10 to +45	-10 to +45
Range, Operating, °C	-55 to +90	-55 to +90	-55 to +90	-55 to +90
Effect on Sensitivity, % Rdg/100°C	+/- .15	+/- .15	+/- .15	+/- .15
Effect on Zero, % R.O./100°C	+/- .30	+/- .30	+/- .30	+/- .30
Electrical				
Rated Output, mV/V, Nominal	2.0	2.0	2.0	2.0
Excitation Voltage, VDC	10	10	10	10
Input Resistance, Ohms	350	350	350	350
Output Resistance, Ohms	350	350	350	350
Insulation Resistance, Megohm	5000	5000	5000	5000
Mechanical				
Safe Overload Range, % R.O.	+/- 300	+/- 300	+/- 300	+/- 300
Weight (kg)	34	38	111	111
Weight w/base (kg)	66	71	203	203
Flexure Material	Steel	Steel	Steel	Steel

SHEAR WEB LOAD CELLS

DIMENSIONS

Review Drawing (in mm)	MODEL			
	FR40M	FR42M	FR60M	FR60M
	CAPACITY (kN)			
	500	600	1100	1350
1. Height Total	167.6	180.3	243.1	243.1
2. Max. Clearance Radius	156.4	156.4	219.7	219.7
3. Cell and Base Diameter	279.4	279.4	406.4	406.4
4. Cell Height to Hub	88.9	101.6	133.3	133.3
5. Cell Body Height	76.2	88.9	120.6	120.6
6. Hub Diameter	122.2	122.2	200.4	200.4
7. Mounting B.C. Diameter	228.6	228.6	331.6	331.6
8. Symmetric B.C. Offset	11.25 degrees	11.25 degrees	9 degrees	9 degrees
9. Mounting Hole Diameter	19.8	19.8	30.0	30.0
10. Hub Thread	M72 x 2, 81.3 Dp.	M72 x 2, 94.0 Dp.	M100 x 3, 120.6 Dp.	M100 x 3, 120.6 Dp.
11. Bolt Head Protrusion	15.2	15.2	20.8	20.8
12. Base Thickness	76.2	76.2	101.6	101.6
13. Base Step Height	.8	.8	.8	.8
14. Base Step Diameter	122.7	122.7	200.4	200.4
15. Base Thread	M72 x 2, 68.6 Dp.	M72 x 2, 68.6 Dp.	M100 x 3, 92.7 Dp.	M100 x 3, 92.7 Dp.



OPTIONS

- Additional bridges
- Output adjustment to standard
- Compression overload protection
- Integral cable
- Custom connectors

ACCESSORIES

- Mating connector
- Loading fixtures
- Interconnect cable
- Shunt calibration resistor
- Instrumentation