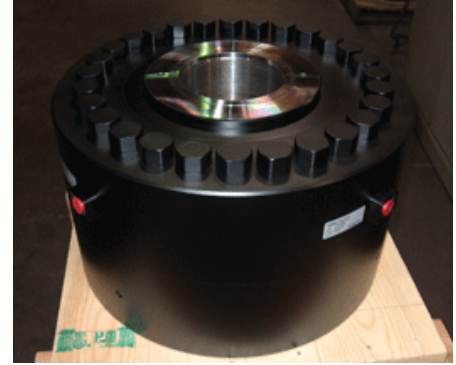


SHEAR WEB LOAD CELLS

HIGH CAPACITY FATIGUE RATED (FR) SERIES FORCE TRANSDUCERS

FEATURES

- First Choice for Fatigue Testing Applications
- Guaranteed for 100 Million Fully Reversed Cycles
- Low Height
- Guaranteed Maximum Off-Center Load and Moment Error
- Low Creep
- Low Susceptibility to Magnetic Fields
- Barometric Pressure Compensation



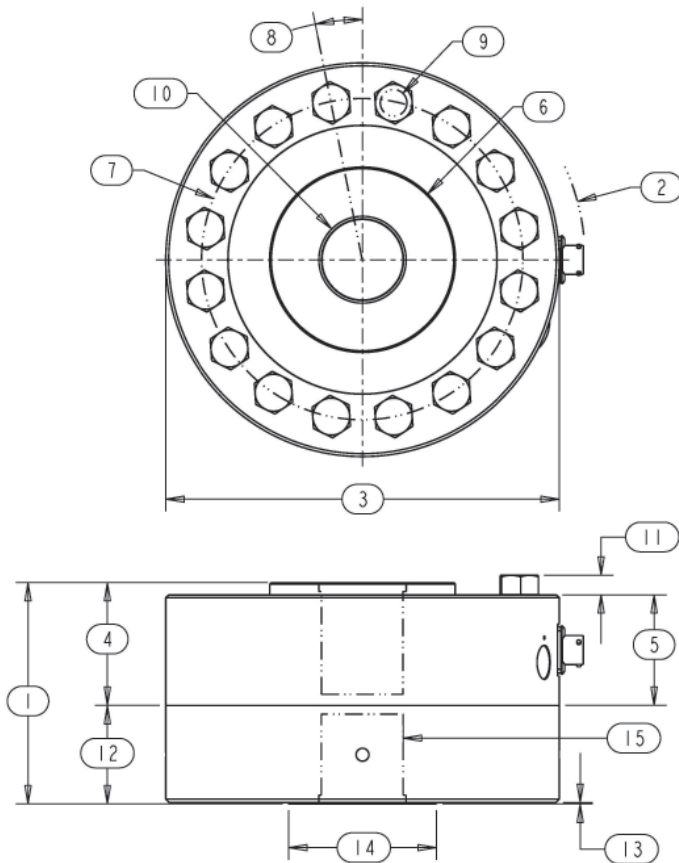
SPECIFICATIONS

PARAMETERS	MODEL			
	FR40	FR42	FR60	FR60
	CAPACITY (lbf)			
	100K	135K	250K	300K
Accuracy				
Static Error Band, % R.O.	+/- .06	+/- .07	+/- .10	+/- .10
Hysteresis, % R.O.	+/- .06	+/- .08	+/- .10	+/- .10
Nonlinearity, % R.O.	+/- .06	+/- .08	+/- .10	+/- .10
Nonrepeatability, % R.O.	+/- .01	+/- .02	+/- .02	+/- .02
Creep, % in 20 minutes	+/- .025	+/- .025	+/- .025	+/- .025
Off-Center Load Sensitivity, %/inch	+/- .25	+/- .25	+/- .25	+/- .25
Side Load Sensitivity, %	+/- .25	+/- .25	+/- .25	+/- .25
Zero Balance, % R.O.	+/- 1.0	+/- 1.0	+/- 1.0	+/- 1.0
Temperature				
Range, Compensated, °F	+15 to +115	+15 to +115	+15 to +115	+15 to +115
Range, Operating, °F	-65 to +200	-65 to +200	-65 to +200	-65 to +200
Effect on Sensitivity, % Rdg/100°F	+/- .08	+/- .08	+/- .08	+/- .08
Effect on Zero, % R.O./100°F	+/- .15	+/- .15	+/- .15	+/- .15
Electrical				
Rated Output, mV/V, Nominal	2.0	2.0	2.0	2.0
Excitation Voltage, VDC	10	10	10	10
Input Resistance, Ohms	350	350	350	350
Output Resistance, Ohms	350	350	350	350
Insulation Resistance, Megohm	5000	5000	5000	5000
Mechanical				
Safe Overload Range, % R.O.	+/- 300	+/- 300	+/- 300	+/- 300
Weight (lbs.)	74	84	245	245
Weight w/base (lbs.)	146	156	448	448
Flexure Material	Steel	Steel	Steel	Steel

SHEAR WEB LOAD CELLS

DIMENSIONS

Review Drawing (in inches)	MODEL			
	FR40	FR42	FR60	FR60
	CAPACITY (lbf)			
	100K	135K	250K	300K
1. Height Total	6.60	7.10	9.57	9.57
2. Max. Clearance Radius	6.16	6.16	8.65	8.65
3. Cell and Base Diameter	11.00	11.00	16.00	16.00
4. Cell Height to Hub	3.50	4.00	5.25	5.25
5. Cell Body Height	3.00	3.50	4.75	4.75
6. Hub Diameter	4.81	4.81	7.89	7.89
7. Mounting B.C. Diameter	9.00	9.00	13.06	13.06
8. Symmetric B.C. Offset	11.25 degrees	11.25 degrees	9.00 degrees	9.00 degrees
9. Mounting Hole Diameter	.78	.78	1.18	1.18
10. Hub Thread	2 3/4 - 8, 3.2 Dp.	2 3/4 - 8, 3.7 Dp.	4 - 8, 4.75 Dp.	4 - 8, 4.75 Dp.
11. Bolt Head Protrusion	.60	.60	.82	.82
12. Base Thickness	3.00	3.00	4.00	4.00
13. Base Step Height	.03	.03	.03	.03
14. Base Step Diameter	4.83	4.83	7.89	7.89
15. Base Thread	2 3/4 - 8, 2.70 Dp.	2 3/4 - 8, 2.70 Dp.	4 - 8, 3.65 Dp.	4 - 8, 3.65 Dp.



OPTIONS

- Additional bridges
- Output adjustment to standard
- Compression overload protection
- Integral cable
- Custom connectors

ACCESSORIES

- Mating connector
- Loading fixtures
- Interconnect cable
- Shunt calibration resistor
- Instrumentation