

COLUMN LOAD CELLS

5100 SERIES HIGH CAPACITY COMPRESSION COLUMN FORCE TRANSDUCERS

FEATURES

- Compact Design
- .2% Accuracy
- Special Capacities to 2 Million lbf.
- Bayonet Connector



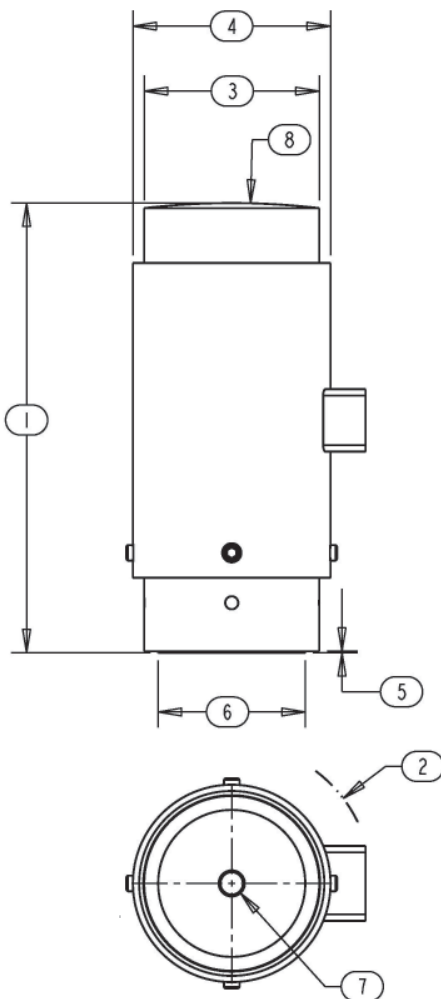
SPECIFICATIONS

PARAMETERS	MODEL			
	5130	5140	5160	5180
	CAPACITY (lbf)			
	100K	250K, 300K	500K, 600K	1000K
Accuracy				
Static Error Band, % R.O.	+/- .2	+/- .2	+/- .2	+/- .2
Hysteresis, % R.O.	+/- .2	+/- .2	+/- .2	+/- .2
Nonlinearity, % R.O.	+/- .2	+/- .2	+/- .2	+/- .2
Nonrepeatability, % R.O.	+/- .01	+/- .01	+/- .01	+/- .01
Creep, % in 20 minutes	+/- .025	+/- .025	+/- .025	+/- .025
Zero Balance, % R.O.	+/- 1.0	+/- 1.0	+/- 1.0	+/- 1.0
Temperature				
Range, Compensated, °F	+15 to +115	+15 to +115	+15 to +115	+15 to +115
Range, Operating, °F	-30 to +200	-30 to +200	-30 to +200	-30 to +200
Effect on Sensitivity, % Rdg/100°F	+/- .3	+/- .3	+/- .3	+/- .3
Effect on Zero, % R.O./100°F	+/- .3	+/- .3	+/- .3	+/- .3
Electrical				
Rated Output, mV/V, Nominal	2.0	2.0	2.0	2.0
Excitation Voltage, VDC	10	10	10	10
Input Resistance, Ohms	350	350	350	350
Output Resistance, Ohms	350	350	350	350
Insulation Resistance, Megohm	5000	5000	5000	5000
Mechanical				
Safe Overload Range, % R.O.	+/- 150	+/- 150	+/- 150	+/- 150
Weight (lbs.)	5	25	45, 46	96
Flexure Material	Steel	Steel	Steel	Steel

COLUMN LOAD CELLS

DIMENSIONS

Review Drawing (in inches)	MODEL			
	5130	5140	5160	5180
	CAPACITY (lbf)			
	100K	250K, 300K	500K, 600K	1000K
1. Height Total	5.00	9.00	10.00	12.00
2. Max. Clearance Radius	1.86	2.78	3.29	4.02
3. End Diameter	2.00	3.50	4.50	6.00
4. Total Diameter	2.38	3.95	5.00	6.50
5. Base Step Height	.03	.03	.03	.03
6. Base Step Diameter	1.68	2.94	3.89	5.02
7. End Thread	3/8 - 24, .50 Dp.	1/2 - 20, .75 Dp.	1 - 14, .75 Dp.	1 - 14, 1.00 Dp.
8. Load Button Spherical Radius	12	15	20	20



OPTIONS

- Dual bridge configuration
- Output adjustment to standard
- Integral cable
- Custom connectors
- Reduced temperature errors

ACCESSORIES

- Loading fixtures
- Interconnect cable
- Shunt calibration resistor
- Instrumentation

THE ENGINEER'S CHOICE FOR FORCE MEASUREMENT PRODUCTS