

COLUMN LOAD CELLS

5000 SERIES HIGH CAPACITY UNIVERSAL COLUMN FORCE TRANSDUCERS

FEATURES

Universal Tension and Compression
 .2% Accuracy
 Capacities to 1 Million lbf.
 Bayonet Connector



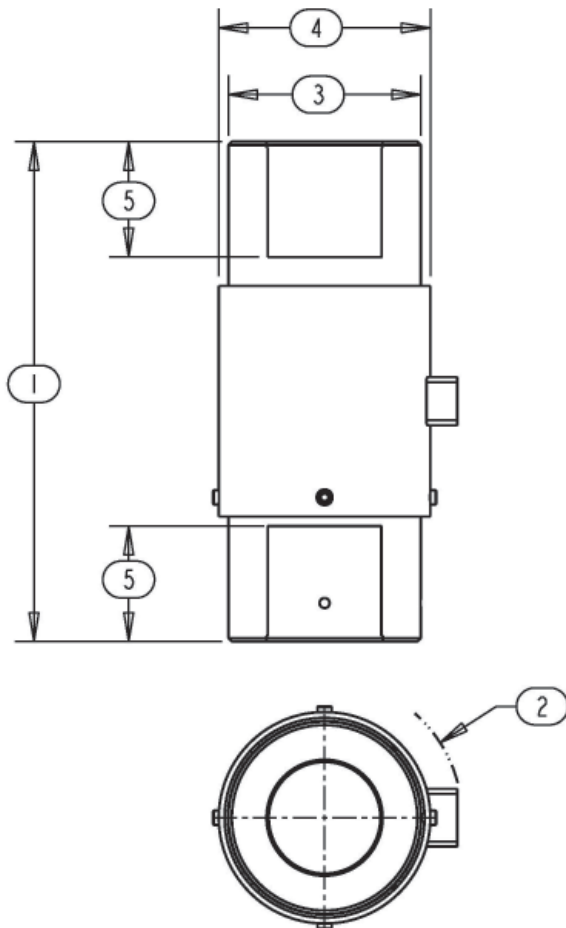
SPECIFICATIONS

| PARAMETERS | MODEL | | | |
|------------------------------------|----------------|-------------|-------------|-------------|
| | 5030 | 5040 | 5060 | 5080 |
| | CAPACITY (lbf) | | | |
| | 100K | 250K, 300K | 500K, 600K | 1000K |
| Accuracy | | | | |
| Static Error Band, % R.O. | +/- .2 | +/- .2 | +/- .2 | +/- .2 |
| Hysteresis, % R.O. | +/- .2 | +/- .2 | +/- .2 | +/- .2 |
| Nonlinearity, % R.O. | +/- .2 | +/- .2 | +/- .2 | +/- .2 |
| Nonrepeatability, % R.O. | +/- .01 | +/- .01 | +/- .01 | +/- .01 |
| Creep, % in 20 minutes | +/- .025 | +/- .025 | +/- .025 | +/- .025 |
| Zero Balance, % R.O. | +/- 1.0 | +/- 1.0 | +/- 1.0 | +/- 1.0 |
| Temperature | | | | |
| Range, Compensated, °F | +15 to +115 | +15 to +115 | +15 to +115 | +15 to +115 |
| Range, Operating, °F | -30 to +200 | -30 to +200 | -30 to +200 | -30 to +200 |
| Effect on Sensitivity, % Rdg/100°F | +/- .3 | +/- .3 | +/- .3 | +/- .3 |
| Effect on Zero, % R.O./100°F | +/- .3 | +/- .3 | +/- .3 | +/- .3 |
| Electrical | | | | |
| Rated Output, mV/V, Nominal | 2.0 | 2.0 | 2.0 | 2.0 |
| Excitation Voltage, VDC | 10 | 10 | 10 | 10 |
| Input Resistance, Ohms | 350 | 350 | 350 | 350 |
| Output Resistance, Ohms | 350 | 350 | 350 | 350 |
| Insulation Resistance, Megohm | 5000 | 5000 | 5000 | 5000 |
| Mechanical | | | | |
| Safe Overload Range, % R.O. | +/- 150 | +/- 150 | +/- 150 | +/- 150 |
| Weight (lbs.) | 14 | 52 | 146, 153 | 329 |
| Flexure Material | Steel | Steel | Steel | Steel |

COLUMN LOAD CELLS

DIMENSIONS

| Review Drawing (in inches) | MODEL | | | |
|-------------------------------|----------------|------------------|----------------------|-----------------|
| | 5030 | 5040 | 5060 | 5080 |
| | CAPACITY (lbf) | | | |
| | 100K | 250K, 300K | 500K, 600K | 1000K |
| 1. Height Total | 10.00 | 13.00 | 23.00 | 27.50 |
| 2. Max. Clearance Radius | 2.26 | 3.53 | 4.27 | 5.50 |
| 3. End Diameter | 3.00 | 5.00 | 6.50 | 9.00 |
| 4. Total Diameter | 3.38 | 5.50 | 7.00 | 9.50 |
| 5. End Thread | 2-12, 2.00 Dp. | 3 - 12, 3.00 Dp. | 4 - 8, 4.50/5.00 Dp. | 6 - 8, 6.00 Dp. |



OPTIONS

- Dual bridge configuration
- Output adjustment to standard
- Integral cable
- Custom connectors
- Reduced temperature errors

ACCESSORIES

- Loading fixtures
- Interconnect cable
- Shunt calibration resistor
- Instrumentation